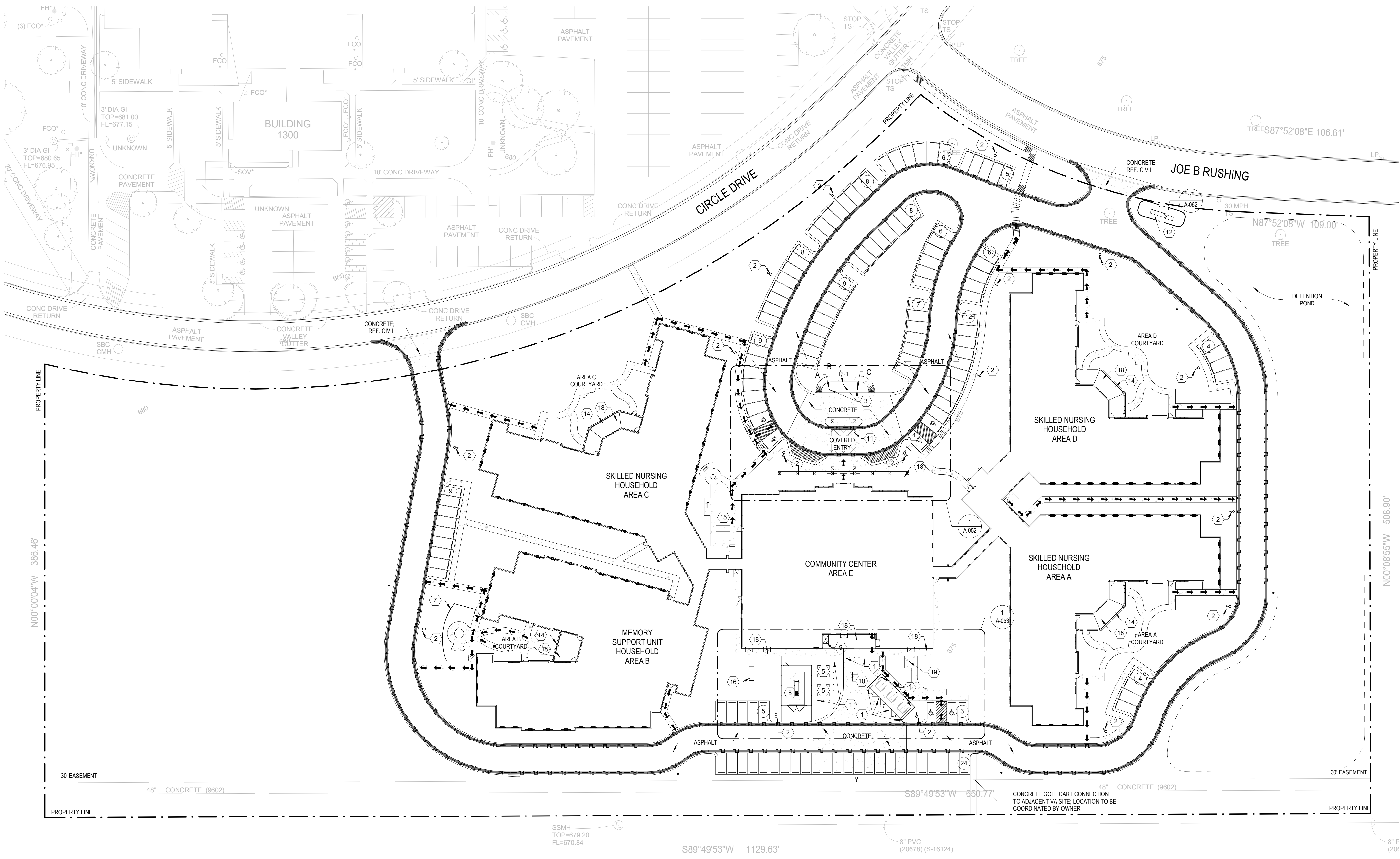


2/2/2021 1:43:37 PM C:\Users\jpr\Documents\ARCH\TVLB DFW SKILLED NURSING\_R19\_1.ju04



1 ARCHITECTURAL SITE PLAN  
1" = 40'-0"

ARCHITECTURAL SITE GENERAL NOTES

1. ARCHITECTURAL SITE PLAN IS ISSUED FOR REFERENCE ONLY.
2. RE: CIVIL DRAWINGS FOR ALL SITE CONSTRUCTION INFORMATION INCLUDING BUT NOT LIMITED TO THE FOLLOWING:
  - SITE GEOMETRY AND DIMENSIONAL CONTROL
  - SITE UTILITIES
  - SITE GRADING AND DRAINAGE
  - ASPHALT/CONCRETE PAVING DETAILS
  - PAVING MARKERS
  - CONCRETE SIDEWALK, CURB, AND GUTTER DETAILS
  - PARKING BUMPERS
  - TRAFFIC SIGNAGE
  - PAVING STRIPING AND CURB MARKINGS
  - TYPICAL HANDICAP SIGNAGE/SPACES
  - SITE SIGNAGE
3. ELECTRICAL DRAWINGS FOR SITE INFORMATION INCLUDING, BUT NOT LIMITED TO THE FOLLOWING:
  - SITE LIGHT STANDARD LOCATIONS AND SIZES
  - ELECTRICAL SLEEVING LOCATIONS AND SIZES
  - TELEPHONE AND CABLE TV PULL BOX LOCATIONS
  - ELECTRICAL MANHOLE LOCATIONS AND DETAILS
  - PULL BOX LOCATIONS AND SIZES FOR VARIOUS SITE LIGHTING ELEMENTS
  - EXTERIOR BUILDING ILLUMINATION AND UTILITY COORDINATION
4. REFERENCE LANDSCAPE DRAWINGS FOR:
  - LANDSCAPE PLANTING AND DETAILS
  - SOILING AND SEEDING
  - LANDSCAPE BED DRAINAGE
  - HARDSCAPE LAYOUT AND DETAILS (SPECIALTY PAVING)
5. REFERENCE IRRIGATION IN LANDSCAPE DRAWINGS FOR:
  - HEAD AND VALVE LOCATIONS AND SIZES
  - IRRIGATION SLEEVING LOCATIONS AND SIZES
  - IRRIGATION SYSTEM CONTROLLER LOCATION
  - DETAILS AND SPECIFICATIONS
6. ALL PARKING STALLS WITHOUT RASIED CONCRETE CURB TO HAVE WHEELSTOP; REF. SITE PLAN FOR GRAPHIC EXTENTS OF WHEELSTOPS

PARKING SPACES

TOTAL SPACES REQUIRED: CONFIRM WIGLO  
TOTAL SPACES PROVIDED: 133  
NOTES:  
1. 1 IN EVERY 8 ACCESSIBLE SPACES SHALL BE SERVED BY A 96 INCH WIDE ACCESS AISLE AND SHALL BE DESIGNATED AS "VAN ACCESSIBLE".

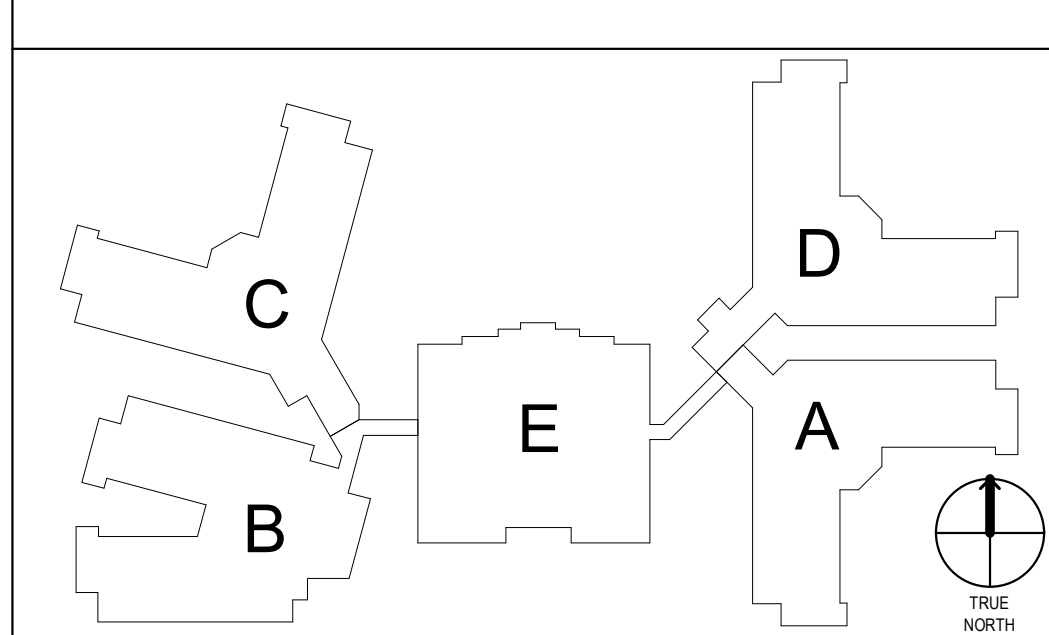
ARCHITECTURAL SITE PLAN LEGEND

- NEW CONCRETE SIDEWALK OR PAVING
- PARKING SPACES
- PROPERTY LINE
- EASEMENT, BUILDING SETBACK & R.O.W.
- FENCE
- NEW PARKING SPACE COUNT
- ACCESSIBLE PARKING SPACE
- FIRE LANE
- REQUIRED ACCESSIBLE PATH
- SITE LIGHT POLE, REF. CIVIL ELEC
- SITE PATHWAY BOLLARD LIGHT, REF. ELEC

ARCHITECTURAL SITE PLAN NOTES BY NUMBER

- 1 CONCRETE PIPE BOLLARDS; REF. 3/A-063
- 2 SITE POLE LIGHT FIXTURE, REF. ELEC.
- 3 ILLUMINATED FLAG POLE - (A) 25' STATE OF TEXAS FLAG, (B) 30' U.S. FLAG, (C) 25' POW/MIA FLAG; REF. A-052 AND ELECTRICAL
- 4 ACCESSIBLE VAN PARKING
- 5 TRANSFORMER PADS, REF. MEP DRAWINGS
- 6 TRASH ENCLOSURE; REF. 4/A-061
- 7 8'-0" TALL WROUGHT IRON FENCE; REF. 7/A-061 FOR DETAILS & LANDSCAPE FOR EXTENTS
- 8 GENERATOR, REF. MEP DRAWINGS
- 9 COVERED CART WASH WITH HOT AND COLD WATER
- 10 GREASE TRAP, REF. MEP DRAWINGS
- 11 SAW CUT DIAMOND PATTERN AT 4' O.C.; REF. CIVIL & LANDSCAPE
- 12 MONUMENT SIGN
- 13 RETAINING WALL
- 14 SCREENED PORCH W/ DOOR
- 15 OUTDOOR THERAPY
- 16 GAS METER, REF. PLUMBING
- 17 CHAIN LINK FENCE
- 18 COVERED PORCH
- 19 EXTERIOR GOLF CART TEMPORARY PARKING W/ CHARGE STATION

KEY PLAN



TEXAS STATE VETERANS  
HOME (TSVH-FW)  
2200 JOE B RUSHING ROAD  
FORT WORTH, TEXAS 76119  
PRDG PROJECT # 19114  
GLO PROJECT # 120001-FW

ISSUE FOR  
GMP

FEBRUARY 03, 2021



NO.	ISSUE	DATE
-----	-------	------

REVISIONS

Title  
ARCHITECTURAL  
SITE PLAN

Sheet  
A-051

Copyright © 2021 PRDG, LLC



3535 Travis St.  
Suite 265  
Dallas, Texas 75204  
1214.915.8410  
www.prdgarch.com



1700 N. Congress  
Austin, TX 78701  
1512.936.3512  
www.glo.texas.gov



1700 N. Congress  
Austin, TX 78701  
1512.463.5500  
www.vlb.texas.gov