



10/17/2023

Parkhill.com

**Densman Health Clinic**  
Renovation



CLIENT

City of Grand Prairie

1413 Densman Street

Grand Prairie, Texas

PROJECT NO.

40567.22

KEY PLAN

10/17/2023 Construction Documents

# DATE DESCRIPTION

**LIFE SAFETY INFORMATION**

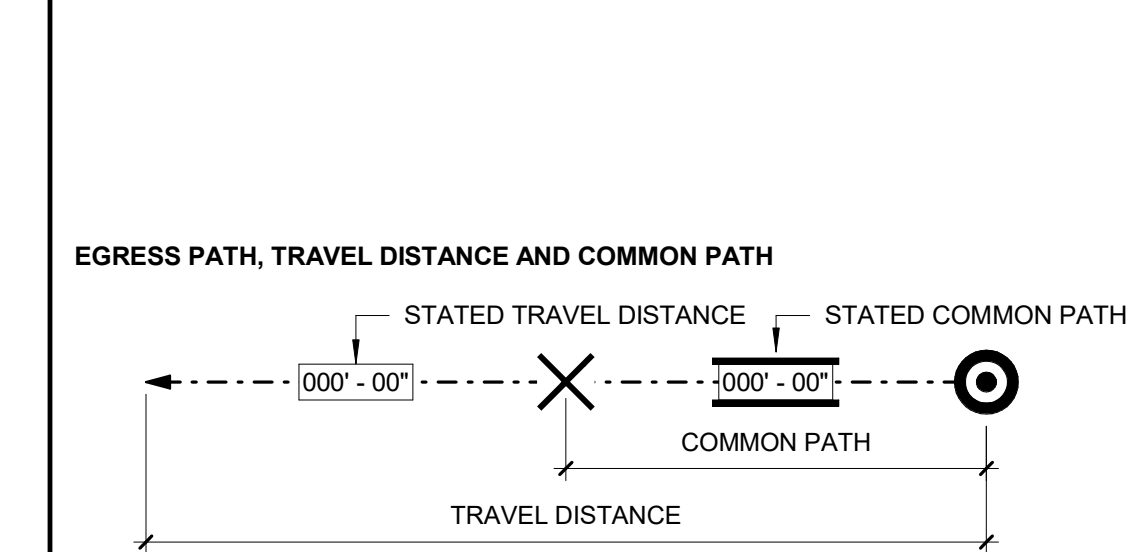
**G-101**

**GENERAL NOTES**

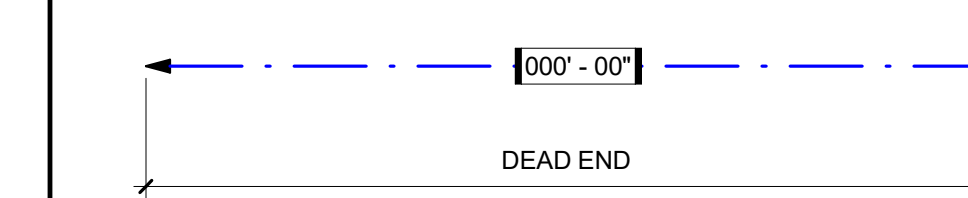
- PROVIDE FIREBLOCKING AT CEILING LINE THROUGHOUT - REF A-111
- FIRE EXTINGUISHERS, (IFC SECTION 906 AND NFPA 10, CHAPTER 6 AND TABLE 6.2.1.1)
  - BUSINESS OCCUPANCY
    - CLASS A - LIGHT HAZARD OCCUPANCY
    - MAXIMUM FLOOR AREA FOR UNIT - 11,250 SF
    - MAXIMUM TRAVEL DISTANCE TO EXTINGUISHER - 75 FT.

**LEGEND**

EGRESS EXIT REQUIRED

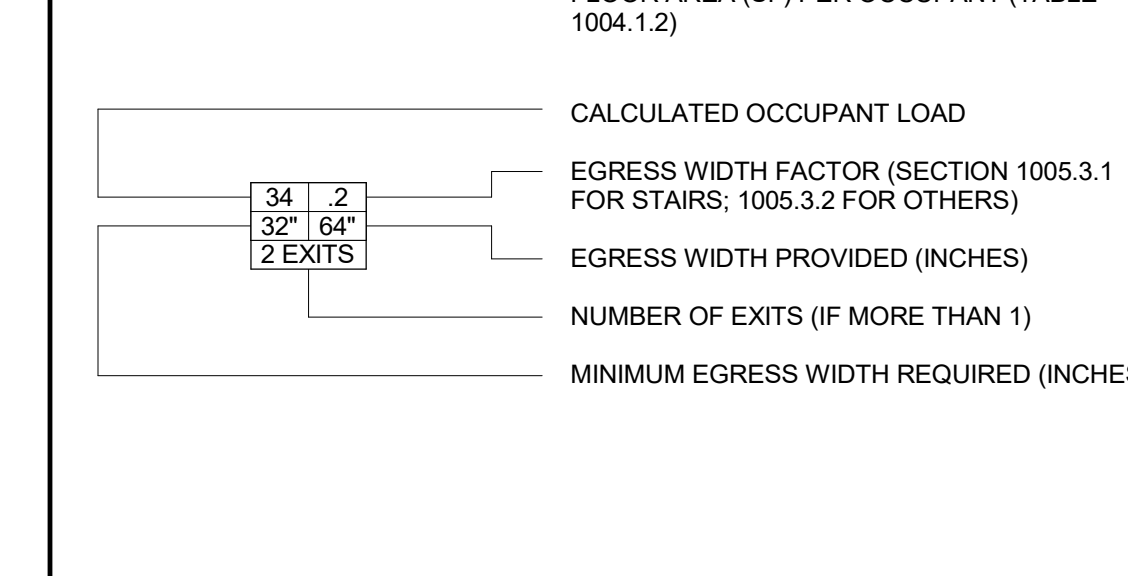
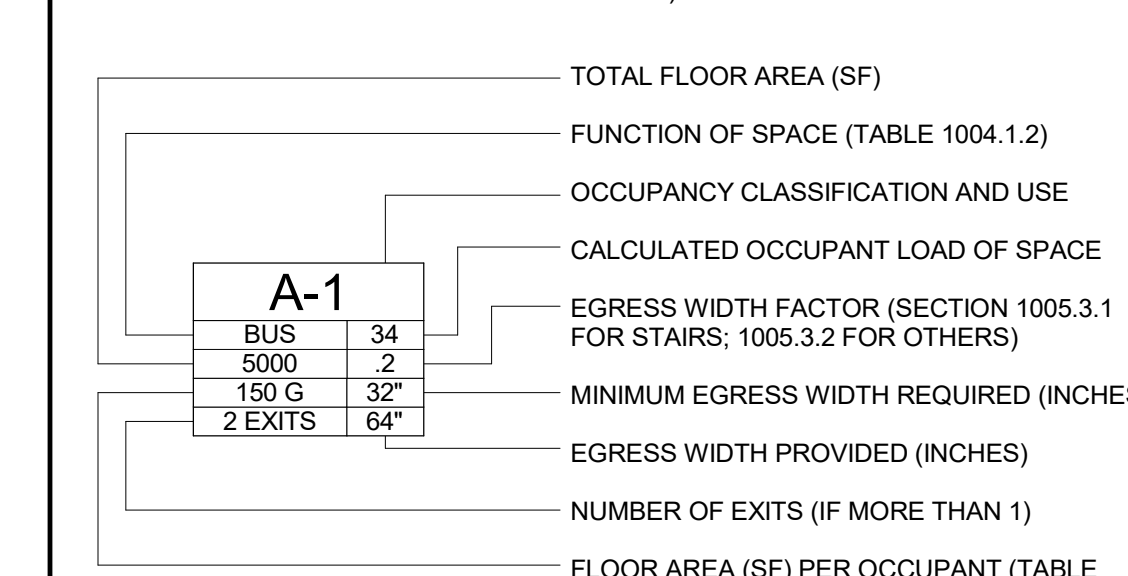
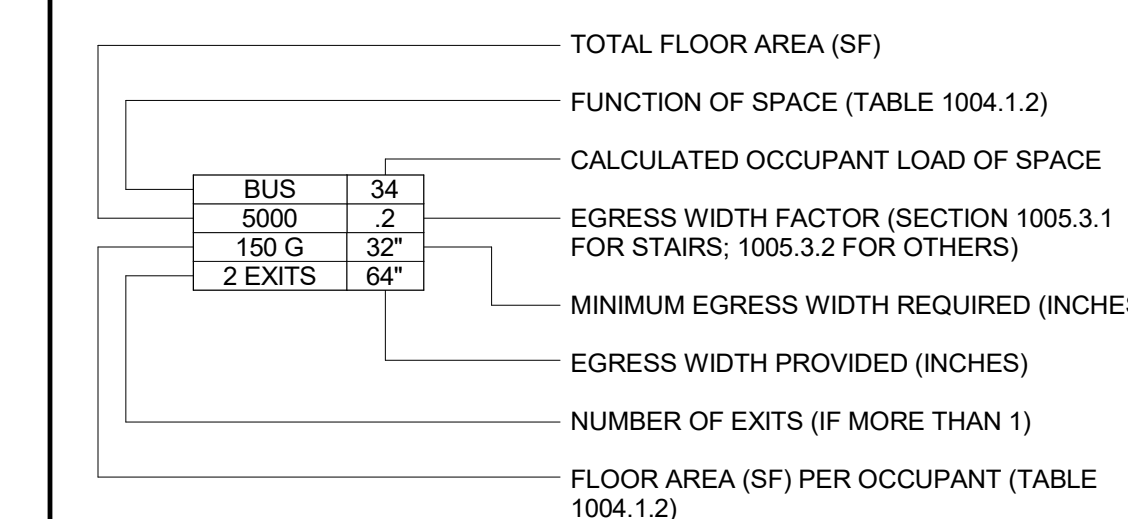


DEAD END CORRIDOR



**ABBREVIATIONS**

- 200' - DISTANCE BETWEEN EXITS
- EW=36" - EXIT WIDTH PROVIDED AT SPECIFIC EXIT
- GSF - GROSS SQUARE FOOT
- NSF - NET SQUARE FOOT
- FEC - FIRE EXTINGUISHER CABINET (FEC)
- TD - TRAVEL DISTANCE
- CPOT - COMMON PATH OF TRAVEL
- (M)DBE - (MINIMUM) DISTANCE BETWEEN EXITS
- OL - OCCUPANT LOAD



**PLUMBING FIXTURE RQMTS - IPC**

OCC.	USE GROUP	OCCUPANT LOAD (ACTUAL)	WATER CLOSET		LAV		DRINK FOUNT. REF. IPC-410	OTHER		
			M	F	M	F		SERV./H	SINK	
A	3	75	30	56	X	19	19	.15	1	X
B	49		98	98	X	61	61	.49	1	X
<b>TOTAL REQUIRED</b>			128	154		80	80	.64	2	
<b>TOTAL PROVIDED</b>			128	154		80	80	.64	2	

**LEGEND**

- ASSEMBLY (UNCONCENTRATED)
- ASSEMBLY (CONCENTRATED)
- BUSINESS

**GENERAL CONSTRUCTION INFORMATION**

**APPLICABLE CODES:**

BUILDING	IBC 2021, IEBC 2021
PLUMBING	IPC 2021
MECHANICAL	IMC 2021
ELECTRICAL	NEC 2020
FIRE	IFC 2021
ENERGY	IECC 2021
ACCESSIBILITY	2012 TAS, 2010 ADA/SAD
OTHER	NORTH CENTRAL TEXAS COUNCIL OF GOVERNMENTS AMENDMENTS

**OCCUPANCY CLASSIFICATION:**

MIXED USE - NONSEPARATED	TOTAL BUILDING AREA - 4,239 SF
BUSINESS - B	BUSINESS - 3,714 SF
ASSEMBLY - A-3	ASSEMBLY - 525 SF

TOTAL STORIES - 1	TOTAL AREA PER STORY - 4,239
	BUILDING HEIGHT - 13' - 6"

**OCCUPANT LOAD CALCULATED**

OCCUPANT LOAD	# OF PEOPLE
ASSEMBLY 90 SF @ 15 SF PER PERSON	6
ASSEMBLY 651 SF @ 7 SF PER PERSON	93
BUSINESS 3,498 SF @ 150 SF PER PERSON	24
<b>TOTAL</b>	<b>124</b>

**EGRESS**

TOTAL OCCUPANT LOAD FOR THE BUILDING	124
TOTAL OCCUPANT LOAD EGRESS WILL ACCOMMODATE	260
REQUIRED CAPACITY BASED ON OCCUPANT LOAD (IN) 124 x 0.4 (SECTION 1005.3.1 STAIRWAYS)	24.8 INCHES
124 x 0.2 (SECTION 1005.3.2 OTHER EGRESS COMPONENTS)	
PROVIDED CAPACITY (INCHES)	
STAIRWAYS	
OTHER EGRESS COMPONENTS	52 INCHES

MAXIMUM ALLOWABLE TRAVEL DISTANCE	200 FEET
LONGEST TRAVEL DISTANCE	98 FEET

MAXIMUM DEAD END LIMIT	20 FEET
MAXIMUM DEAD END LIMIT PROVIDED	0 FEET

COMMON PATH OF EGRESS TRAVEL	75 FEET
COMMON PATH OF EGRESS TRAVEL PROVIDED	24 FEET

TWO EXITS REQUIRED WHERE OCCUPANT LOAD EXCEEDS	49
--	----

MINIMUM NUMBER OF EXITS FOR OCCUPANT LOAD	
1-500	2 EXITS
501-1000	3 EXITS
MORE THAN 1000	4 EXITS

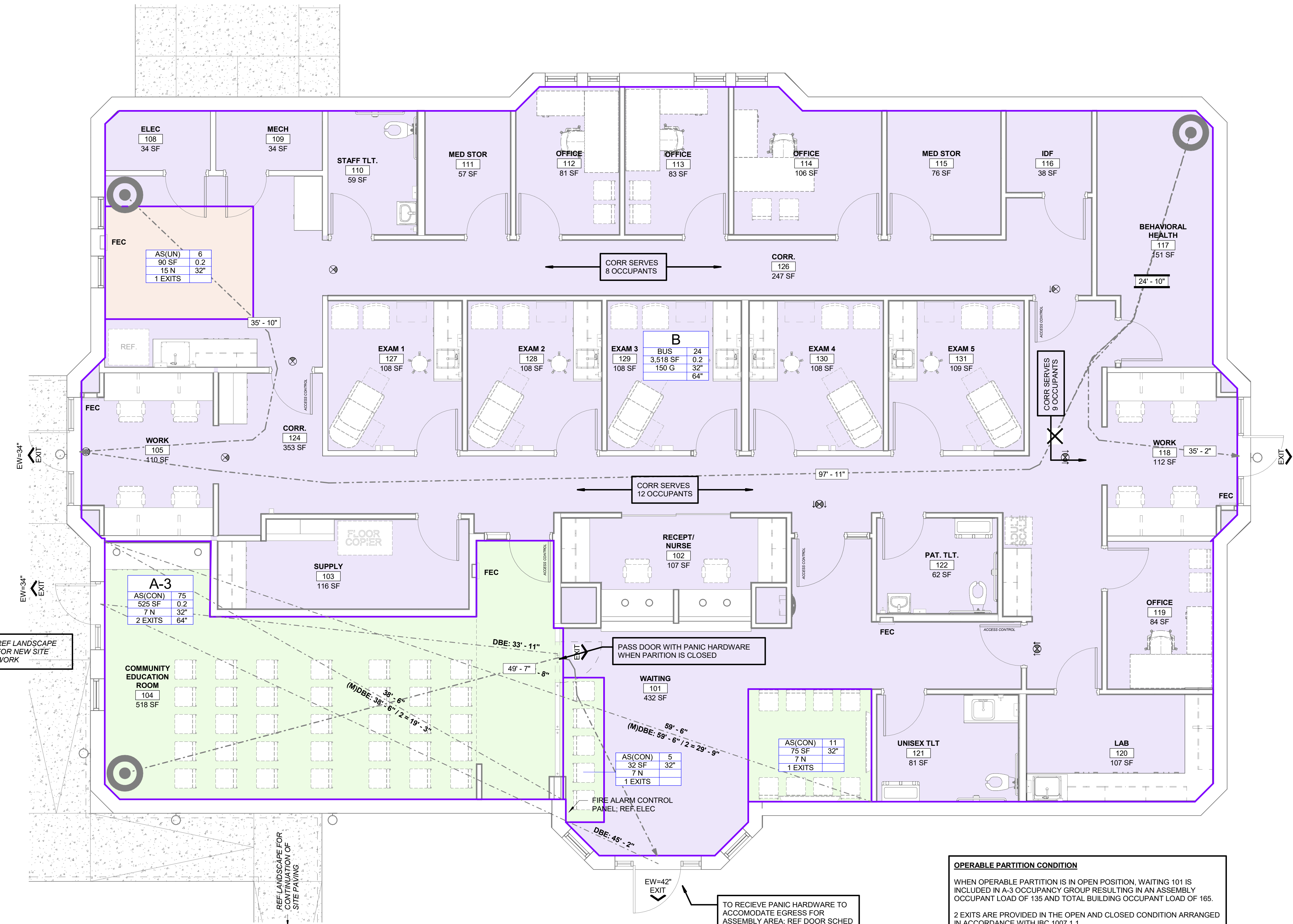
**FIRE PROTECTION RQMTS (TAB 601)**

**CONSTRUCTION TYPE: TYPE V-B**  
**AUTOMATIC FIRE SPRINKLER SYSTEM: NO**

BUILDING ELEMENT PROTECTION	0 HOUR(S)
BEARING WALLS	0 HOUR(S)
INTERIOR	0 HOUR(S)
NONBEARING WALLS AND PARTITIONS (TABLE 602)	SEE TABLE 602 HOUR(S)
EXTERIOR	602 HOUR(S)
NONBEARING WALLS AND PARTITIONS	
INTERIOR	0 HOUR(S)
FLOOR CONSTRUCTION AND ASSOCIATED SECONDARY MEMBERS (SEE SECTION 202)	0 HOUR(S)
ROOF CONSTRUCTION AND ASSOCIATED SECONDARY MEMBERS (SEE SECTION 202)	0 HOUR(S)

**OCCUPANT LOAD TABLE (2018, 2021)**

FUNCTION OF SPACE (1004.5)	OCC PER SF
ACCESSORY STORAGE AREAS, MECHANICAL, EQUIPMENT ROOM	300 GROSS
AGRICULTURE BUILDING	300 GROSS
AIRCRAFT HANGAR	500 GROSS
AIRPORT TERMINAL	
BAGGAGE CLAIM	20 GROSS
BAGGAGE HANDLING	300 GROSS
CONCOURSE	100 GROSS
WAITING AREAS	15 GROSS
ASSEMBLY	
GAMING FLOORS (KENO, SLOTS, ETC.)	11 GROSS
EXHIBIT GALLERY AND MUSEUM	30 NET
ASSEMBLY W/ FIXED SEATING	SEE SECTION 1004.6
ASSEMBLY W/O FIXED SEATING	
CONCENTRATED (CHAIRS ONLY-NOT FIXED)	7 NET
STANDING SPACE	5 NET
UNCONCENTRATED (TABLES AND CHAIRS)	15 NET
BOWLING CENTERS, ALLOW 5 PERSONS FOR EACH LANE INCLUDING 15 FEET OF RUNWAY, AND FOR ADDITIONAL AREAS	7 NET
BUSINESS AREAS	150 GROSS
CONCENTRATED BUSINESS USE AREA	SEE SECTION 1004.8
COURT ROOMS-OTHER THAN FIXED SEATING AREAS	40 NET
DAY CARE	35 NET
LABORATORIES	50 GROSS
EDUCATIONAL	
CLASSROOM AREA	20 NET
SHOPS AND OTHER VOCATIONAL ROOM AREAS	50 NET
EXERCISE ROOMS	50 GROSS
H-S FABRICATION AND MANUFACTURING AREAS	200 GROSS
INDUSTRIAL	100 GROSS
INDUSTRIAL AREAS	
INPATIENT TREATMENT AREAS	240 GROSS
OUTPATIENT AREAS	100 GROSS
SLEEPING AREAS	120 GROSS
KITCHENS, COMMERCIAL	200 GROSS
LIBRARY	
READING ROOM	50 NET
STACK AREA	100 GROSS
LOCKER ROOMS	50 GROSS
MALL BUILDINGS - COVERED AND OPEN	SEE SECTION 402.8.2
MERCANTILE	
AREAS ON OTHER FLOORS	60 GROSS
STORAGE, STOCK, SHIPPING AREAS	300 GROSS
PARKING GARAGES	200 GROSS
RESIDENTIAL	200 GROSS
SKATING RINKS, SWIMMING POOLS	
RINK AND POOL	50 GROSS
DECKS	15 GROSS
STAGES AND PLATFORMS	15 NET
WAREHOUSES	500 GROSS



**A1 FIRST FLOOR - LIFE SAFETY PLAN**  
1/4" = 1'-0"

E:\23 10/17/2023 3:36:41 PM

**OPERABLE PARTITION CONDITION**  
WHEN OPERABLE PARTITION IS IN OPEN POSITION, WAITING 101 IS INCLUDED IN A-3 OCCUPANCY GROUP RESULTING IN AN ASSEMBLY OCCUPANT LOAD OF 135 AND TOTAL BUILDING OCCUPANT LOAD OF 165.  
2 EXITS ARE PROVIDED IN THE OPEN AND CLOSED CONDITION ARRANGED IN ACCORDANCE WITH IBC 1007.1.1